

Mahalo to our Volunteers!

John Saul Harvest Moon Golf Tournament Volunteers

Robin Webster
Betsy Lygren
Bill & Amy Greaves
Lorraine Tamarabuchi
Liz Janes-Brown
David Fukuda
Joanie Traynor
Tammy Ash Perkins
Maryanna Little
Beth Ivarrison
Bob Bangerter
Guy Engeln
Helen McCord
Gail Gnazzo
Ron Williams
Doris Capanash
Ron Capanash
Don Sheridan
Jessica Howland

Elaine Gast
Cathy Torchiana
Peter Cahill
Tom Risko
Darlene Guenther
Kimi Hirakawa
Kristin Oka
Allison Ka'aihili
Peter Cahill
Sandi Tanji
Felicia Smith
Cassady Baker
Emily Tanaka
Brittany Madigan
Bryanna Madriaga
Liana Takamine
Tamil Manju
Kyle Lebag

Upcountry Rotary

Bill and Vbeke Bates
Debra & James Lordan
Richard Woodford
Lloyd Imai
Darrell & Mary Orwig

Martha Vanderlin
Derek K.S. Lee
Tim Wheeler
Claire Schopen

Growing Dreams 2004

Emily Agusti
Mary Jane Colbert
Ed Orszula
Hertha Orszula
Gretchen Ladley
Dianne Harrison
Tamiko Tucker
Sharmen Graydon
Jay Van Zwalenburg
Barbara Sauer

Marica Linstrum
Pam Wicks
Diana Stuart
Linda Petersen
Ann Burkholter
Ann Pirsch
Kathy Lindsey
Patricia Walkington.
Lori Chang
Diane Morgan

Aloha,

We would like to share the Maui Youth & Family Services 2003-04 Annual Report with you. In this report you will see many of the year's highlights as well as the financial report of expenditures.

The year marked significant achievements and growth for us in many areas, most notably in the continuous development of our programs, from our Emergency Shelter, which provides a safe haven for youth who have nowhere else to go, to our Community Based Instruction Program, which provides youth identified by the Department of Education with the resources to become academically successful.

Our advancements and work in these important areas are due in large part to the extensive network of support from fellow agencies and organizations, volunteers, donors, and staff, who, working together, provide such an important service to the youth of our community.

Mahalo to each and every one of you for your contributions to Maui Youth & Family Services. With your help, we are surely "Building better lives with Hawaii's families."

Sincerely,

Gail Gnazzo
CEO, Maui Youth & Family Services



Maui Youth & Family

Services, Inc Programs

Community Based Instruction Program (CBI)

The Community Based Instruction Program (CBI) offers a structured, supportive academic atmosphere utilizing an integrated behavioral health and educational approach aimed at maximizing the learning potential of youth identified by the Hawaii Department of Education. Our goal is to equip students with skills necessary to overcome existing barriers and learn new strategies to achieve academic and social goals. We serve students living on Maui who are intermediate or high school level and who have experienced serious behavioral disturbances which interfere with their ability to function in campus based programs.

Ka Pono "To Become Whole, Excellent"

Our community based residential program gives support and assistance to youth and their families. Our primary purpose is to aid youth with behavioral, emotional and/or family problems by providing a structured environment in a community based setting. We strive to meet the youth's developmental needs by nurturing positive, personal and interpersonal behaviors. The program's basic philosophy is a belief that if young people are provided the opportunity to succeed, within a safe and supportive environment, they will respond positively. Provided with direction and consistent positive encouragement, we have seen many young people achieve dreams and goals previously thought to be unattainable.

Ho`omaka Hou - "A New Beginning "

The primary purpose of the residential adolescent substance use disorder treatment program is to provide adolescents with tools needed to become drug free. Remaining abstinent from alcohol and other drugs, increases the likelihood of a healthier family unit. These tools are in the form of education, coping skills, and other concrete strategies for maintaining a clean and sober lifestyle. It is designed to foster chemical independence for youth ages 12-17 through an intensive, structured therapeutic program, combined with a safe,

controlled environment. A professional and paraprofessional staff is trained in substance use disorder treatment and adolescent care, and provides youth with 24 hour supervision.

I Mua Mau O'hana - "Families Moving Forward"

This is a federally funded collaborative program with Marimed Foundation for youth who have successfully completed MYFS programs or Marimed's Kailana program. Its purpose is to provide these youth with vital transitional care and support including participation in the community 'Ohana associations made up of parents, community, service agencies and others to ensure a successful return to their communities.

School & Community Based

Outpatient Substance Use Disorder Treatment

This program is designed to provide treatment for students who are experiencing difficulties associated with substance use and abuse. Based on the philosophy that addiction is a disease that severely impacts the life of chemically dependent youth, the individuals around the user, and society, this is a collaborative effort between individual schools and MYFS to provide substance abuse treatment on an outpatient basis.

Emergency Shelter Program

The Emergency Shelter Program provides a safe alternative for abused, neglected, runaway, or abandoned youth. Services are also available for youth with emotional/behavioral difficulties, families in crisis and those who are in need of temporary supervision.

Hale Ho`omana - "House of Empowerment"

Hale Ho`omana is designed to coordinate professional services in support of youth in transition to independence. It is intended for older adolescents, ages 16-19. The primary purpose is to provide young adults with the skills and knowledge they need to live independently in the community as productive members of society.

More Programs

Hale Ho`omana continued

A counselor is available Monday through Friday and on-call for emergencies. Hale Ho`omana is located in Lahaina, Maui, and is within walking distance to a multitude of retail stores, restaurants, and hospitality related businesses, all of which provide employment opportunities. The program services up to 8 young adults at a time.

Residential Intensive Program

The Residential Intensive Program is designed to meet the needs of youth whose emotional problems and behavior disorders require above-average tolerance and coordinated multi-modality treatment, and whose emotional growth requires family care. Participants are between the ages of 12 and 17 years and their permanent plan calls for eventual reunification with the natural family or a pre-selected permanent family.

Intensive Services

Skills trainers are trained to provide short term one-to-one or small group skills training, support and supervision to youngsters 3-19 years old with highly specialized needs requiring specialized, diagnosis specific training for providers to avert treatment in more restrictive environment. Services are provided to families in the home or the community.

E Kupono Kakou "To Strive for the Summit" is an after school program, structured after the nationally replicated "Project Venture," offered free of charge to Lao School 6th graders. The program features experiential activities, tutoring and community service. The goal is to focus on developing and strengthening youth by teaching positive communication, growing self confidence, encouraging academic excellence and supporting connection with local culture.

Highlights

July 2003 HYSN Annual Meeting and Election of MYFS CEO, Board Secretary; Public Policy Chair
Focus Maui Nui
New Website - www.myfs.org launched
Growing Dreams 2003

August 2003 All residential training - Maui Prince Hotel
Institutional Review Board Meeting - I. M. O.
Legislative Joint Committee Hearing
Lt. Governor. Talk Story
BIG ISLAND ICE SUMMIT

September 2003

Lt. Governor's Drug Summit - Honolulu, HI

October 2003

Statewide Children of Prisoners Grant Award (Collaborative with HYSN)

November 2003

First Annual John Saul Harvest Moon Golf Tournament- Kihei
Family and Youth Services Bureau Orientation -
Mentoring Children of Prisoners, Washington, DC
Hawaii Juvenile Justice Project - Vice Chairman

December 2003

Blueprint for Change - Legislative Breakfast, State Capital

January 2004

Board of Directors Annual Meeting & Installation
Mayor's Economic Summit - Wailea, Maui
HYSN/Legislative Luncheon - Testimony - State Capital
HYSN Public Policy Chairman- Legislative visits and Testimony

April 2004 -

Next Level - Small Business Development
Employee Party
Annual Board and Staff Retreat

May 2004 -

Lt. Governor's AD HOC Drug committee
Maui Hotel Association Charity Walk

June 2004 -

Lt. Governor's Ad Hoc Drug Committee

Statement of Functional Expenses

Fiscal Year Ended June 30, 2004

	Program Services		Supporting Services				Total Program	Management and General	Fundraising	Total Expenses
	Family Services	Residential	Educational Services	Substance Abuse	Youth Services					
Salaries and wages	\$ 347,716	\$ 988,275	\$ 487,456	\$1,255,666	\$ 184,925	\$3,264,038	\$ -	\$ 11,645	\$3,275,683	
Payroll taxes and employee benefits	91,851	258,892	126,221	331,356	48,256	856,576	-	3,048	859,624	
Accrued vacation expense	-	-	-	-	-	-	-	-	-3,728	
Reallocation to management and general and fundraising	(11,443)	(147,397)	(13,493)	(288,986)	(48,677)	(509,996)	499,017	10,979	-	
Total salaries and related expenses	428,124	1,099,770	600,184	1,298,036	184,504	3,610,618	502,745	25,672	4,139,035	
Contractual services	16,194	16,938	33,910	419,695	25,457	512,194	-	59	512,253	
Supplies	5,266	47,987	20,869	62,586	16,185	152,893	2,975	1,532	157,400	
Depreciation	1,945	42,209	8,987	64,848	5,554	123,543	5,469	59	129,071	
Foster care	-	123,600	-	-	-	123,600	-	-	- 123,600	
Food	2	36,966	8,376	50,555	1,223	97,122	5,990	-	- 103,112	
Utilities	3,060	27,675	9,459	34,575	4,153	78,922	2,634	50	81,606	
Insurance	6,678	25,935	10,650	30,797	5,032	79,092	-	221	79,313	
Travel	11,157	16,120	4,111	38,862	3,441	73,691	-	664	74,355	
Professional fees	2,497	7,063	3,477	8,986	16,812	38,835	-	24,208	63,043	
Repairs and maintenance	1,083	36,927	3,523	18,815	875	61,223	-	35	61,258	
Rent	3,630	919	26,033	1,767	7,588	39,937	-	4	39,941	
Dues and membership fees	1,959	6,747	3,699	7,703	1,344	21,452	6,836	2,820	31,108	
Automobile	1,014	12,414	6,255	8,809	2,188	30,680	-	35	30,715	
Recruiting	923	1,710	795	20,622	83	24,133	-	5	24,138	
Advertising	1,881	5,646	2,726	7,300	1,089	18,642	-	386	19,028	
Training and conference	1,823	3,125	1,630	7,089	1,445	15,112	-	80	15,192	
Payroll services	1,488	4,223	2,074	5,382	778	13,945	-	50	13,995	
Postage and delivery	933	2,599	1,233	3,438	518	8,721	-	2,200	10,921	
Miscellaneous	-	6,371	-	-	-	6,371	1,209	-	- 7,580	
Equipment rental	425	1,232	686	1,548	224	4,115	-	14	4,129	
Client stipend	-	2,242	160	910	-	3,312	-	-	- 3,312	
Total functional expenses	\$ 490,162	\$1,528,695	\$748,949	\$2,092,594	\$278,537	\$5,138,937	\$527,858	\$58,096	\$5,724,891	

MYFS Public Relations/Community Education

Press Releases

The following press releases were prepared and distributed in fiscal year 2002/03

John Saul Inaugural Golf Tournament - 10/03
MYFS Celebrates 25th Anniversary with Luncheon- 12/03
Rachel Goode Named to MYFS Admissions - 3/04
Growing Dreams Set for July 04 - 4/04
Macy's Day to Raise Funds for Nonprofits
MYFS Employee Wins Ho'olaulima Award
Growing Dreams - 5/04

Advertising

Chemical dependency ads ran September creating awareness for funds available to parents.

Annual Report

An annual report was prepared and distributed in September of 2004.

Events

John Saul Golf Tournament

The first annual John Saul Harvest Moon Golf Tournament was held in November at the Elleair Maui Golf Club in Kihei. This night time event drew teams of six to play and build camaraderie in what promises to be another sell-out event for the agency building both goodwill and awareness for Maui Youth & Family Services.

Growing Dreams July 2003

The MYFS signature event continues to be refined and expanded as the community grew as well as the attendees. The 3rd annual event was for the first time a sell-out and has set the trend for other similar non-profit events.

Newsletters

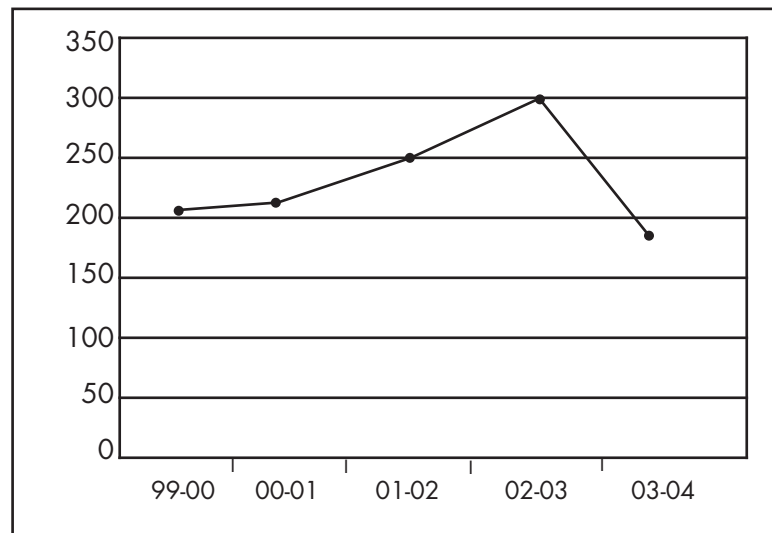
The MYFS newsletter, Lifeline was produced and distributed in Fall 2003 and Spring 2004, and 11,000 copies distributed.

Video

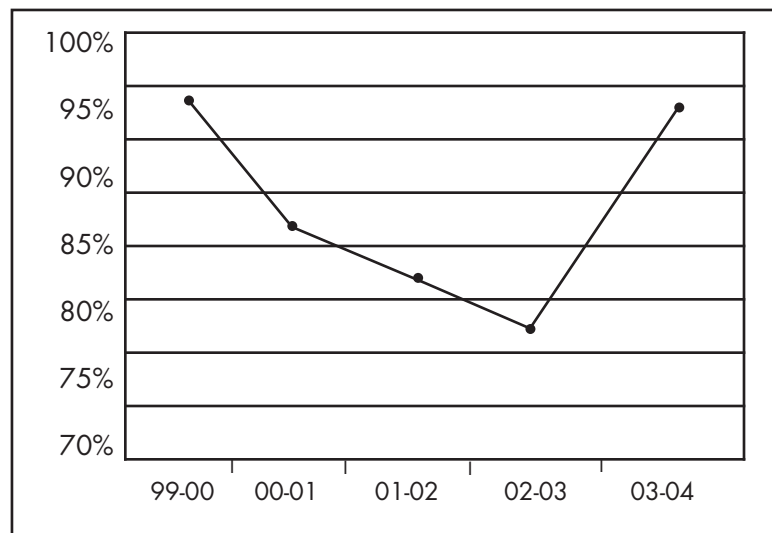
The Marketing/Development Committee had several issues to discuss, including a video for the agency. A script was written in October and is in pre-production with a goal for completion in early 2005.

Summary of Agency

Total Agency Incident Reports



Overall Compliance by Fiscal Year





Visual Highlights

Clockwise from upper left: Rene van Rems wowed the audience again at Growing Dreams while volunteers and models get ready for the sell-out event. Upcountry Rotary Club lends a hand during a community work day with painting and other projects. Washington Mutual planted a hedge for MYFS as part of an incentive trip to the island. The I Mua Mau O'hana voyaging program made great strides in 2004.

